

WJ-GXD400 Version-up Process

Jan.29,'10 (Ver1.0)

23.Apr,'10 (Ver.1.1)

1.Preparation

(1). Latest firmware from BIG-WEB

(2). PC Vista Business 32bit

XP Professional SP2 or SP3

XP Home SP2 or SP3

CPU : Pentium 4 3Ghz or faster

Memory : 1 GB or more

Monitor : 1,024 x 768 pixels or more 24-bit True color or better

Network interface : 10/100 Mbps Network interface card must be installed

Web browser : Internet Explorer® 7.0

Internet Explorer® 6.0 SP2

(3).LAN Cable *Straight cable is required to connect PC & GXD400 using maintenance port.

2. Version-Up process

2.1 Flow of this process

Step-1 : Get latest firmware from BIG-WEB, and store in your PC.

Step-2 : Store the existing setting data into PC.

Step-3 : Upload firmware

Step-4 : Check the version on Maintenance menu.

2.2 Confirm network connection using PING command.

3.Backup the setting data

3.1 INPUT the following address to IE address bar.

<http://xxx.xxx.xxx.xxx/cgi-bin/getinfo?FILE=3>

* Factory Default

Maintenance port : 192.168.2.250

Network Port : 192.168.0.250



3.2 Input User Name & Password

* Factory default

User Name : admin

Password : 12345

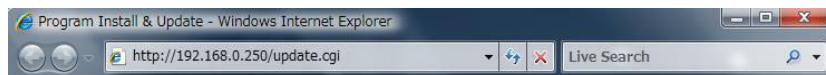
3.3 Pop up appear, and save the file ("nr400set.bin" or "gxd400set.bin") into your PC.

3.4 Check the setting data be stored correctly in your PC.

4.Upload firmware

4.1 INPUT the following address to IE address bar.

<http://xxx.xxx.xxx.xxx/update.cgi>



4.2 "GXD400 Program Install & Update" screen will appear.

* Check the box of "Initialize HTML".

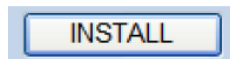
A screenshot of the "GXD400 Program Install & Update" web interface displayed in a Windows Internet Explorer browser. The browser's address bar shows "http://192.168.0.250/update.cgi". The page title is "GXD400 Program Install & Update". The interface includes a login section with "UserName:" and "Password:" fields. Below this is a table displaying system information: Hardware Version (HARD VERSION : 01 / PLD VERSION : 00/14), SERIAL No. (20080613), MAC Address (PORT1: 00:80:45:0d:00:01, MAINTENANCE: 00:80:45:53:F0:6C), and PROGRAM Ver. (V1.10 (NWP:1.1004 / MP:1.0013)). At the bottom, there is a checkbox labeled "Initialize HTML." which is checked and highlighted with a red rectangle, and an "INSTALL" button. A status bar at the very bottom of the browser window indicates "インターネット | 保護モード: 有効" and "100%".

4.3 Input User Name & Password

| | |
|------------|--|
| UserName : | <input type="text" value="admin"/> |
| Password : | <input type="password" value="....."/> |

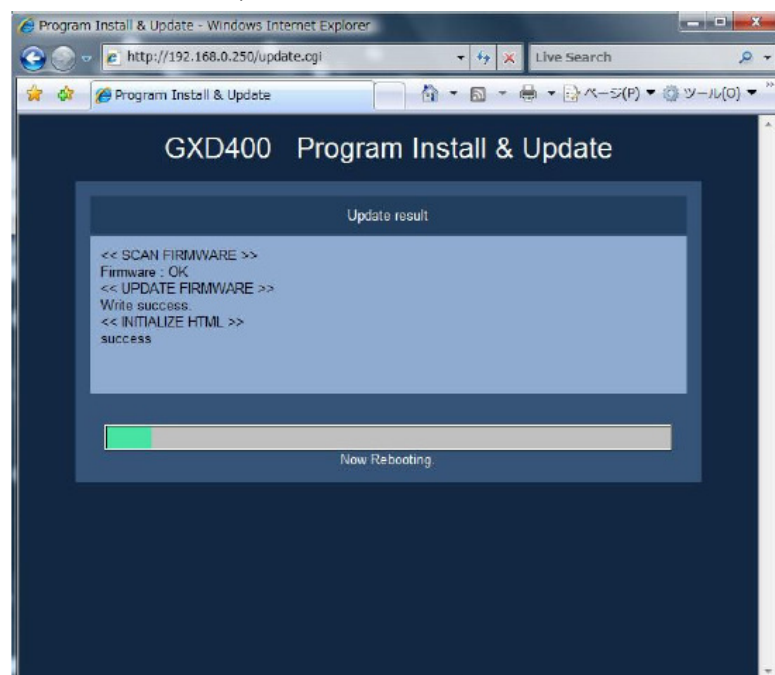
4.4 Click "Browse" button, and specify the new firmware you stored at 2.1 Step-1.

4.5 Click "INSTALL" button. "Now update...." will appear.

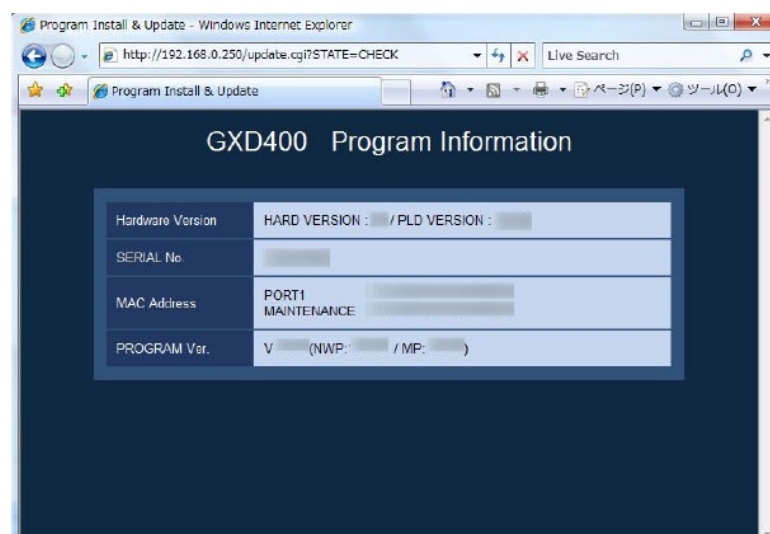


* It will take approx.15 min. to update firmware.

4.6 If updating process finish correctly,

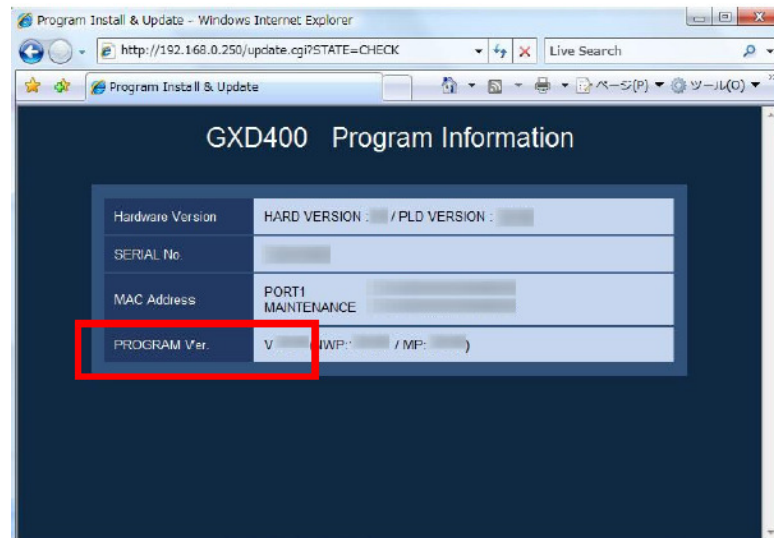


4.7 The following screen will appear.



5. Confirm the PROGRAM Version

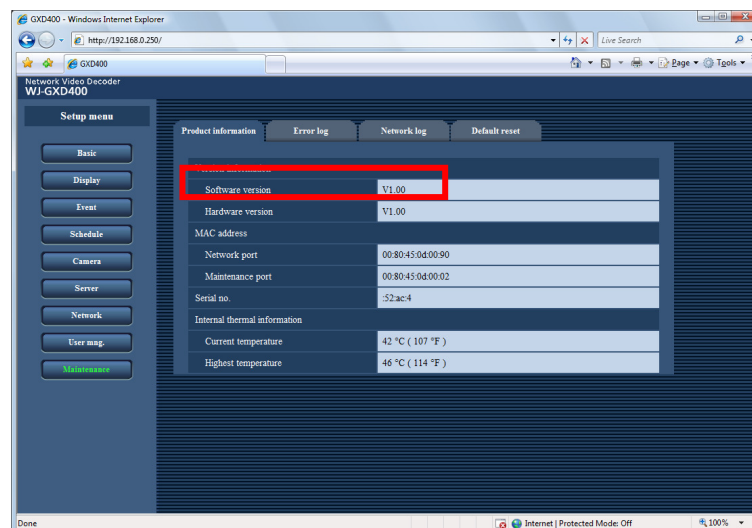
5.1 Check the program version on "GXD400 Program Information" screen



5.2 Check from the PC again.

SETUP > Maintenance > Product information

* Check the setting data . (Remain same as before this upgrade process)



*** Finish updating process ***

6. How to upload stored setting data

* If setting data was initialized on firmware upgrade process.

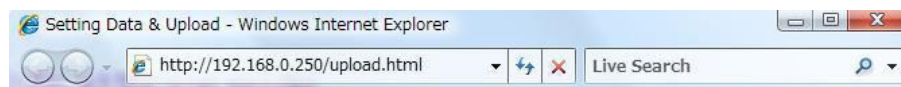
6.1 INPUT the following address to IE address bar.

<http://xxx.xxx.xxx.xxx/upload.html>

* Factory default

Maintenance port : 192.168.2.250

Network Port : 192.168.0.250



6.2 "GXD400 Setting Data & Upload" screen will appear.



6.3 Input User Name & Password

| | |
|------------|--|
| UserName: | <input type="text" value="admin"/> |
| Password : | <input type="password" value="•••••"/> |

* Factory default

User Name : admin

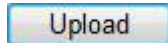
Password : 12345

6.4 Click "Browse" button, and specify the stored setting data you stored at 3.3.

Ex) "nr400set.bin" stored at C drive under minato directory case



6.5 Click "INSTALL" button. "Now update...." will appear.



6.6 After updating process finish correctly, GXD400 will automatically reboot.



6.7 Click [OK] button, and close Web browser.

After reboot process, the stored data will be recovered.

* Check the setting data as 5.2.

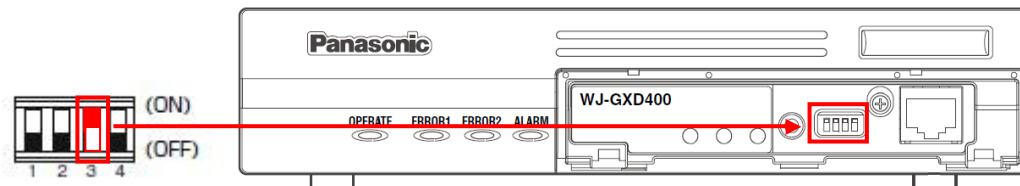
*** Finish uploading stored data process ***

7. SAFE MODE recovery

*When you cannot connect to GXD400 during the firmware upgrade process or after the process because of power failure or other reason, Try this process. If not so, do not try this.

7.1 Open the front panel, and set [MODE] sw3 "ON".

* After the recovery process, set [MODE] sw3 "OFF" :original position



7.2 Power on

7.3 This equipment will start up on "SAFE MODE".

* If start up with "SAFE MODE", IP address becomes factory default.

So if it's address make conflict on network, leave this from network.

7.4 INPUT the following address to IE address bar.

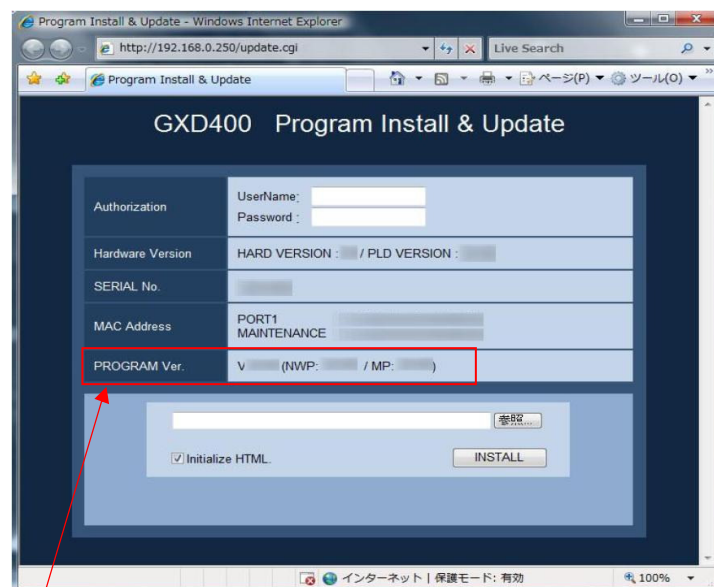
<http://xxx.xxx.xxx.xxx/update.cgi>

Maintenance port : 192.168.2.250

Network Port : 192.168.0.250



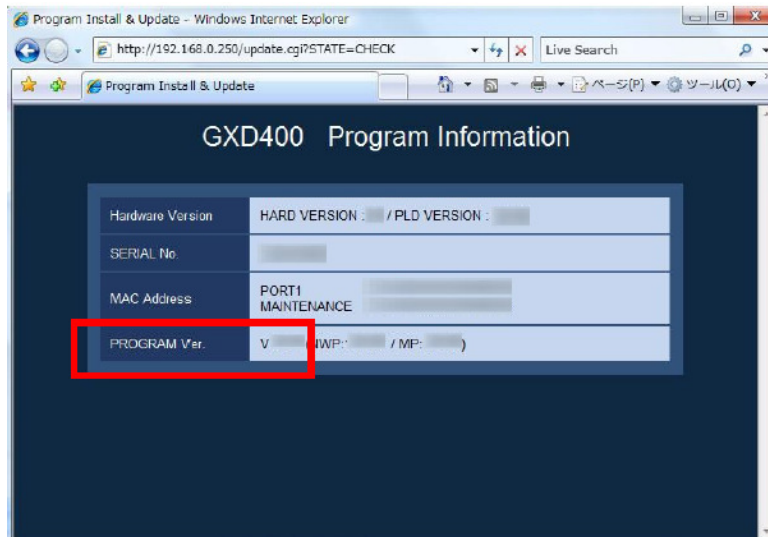
7.5 "GX400 Program Install & Update" screen will appear.



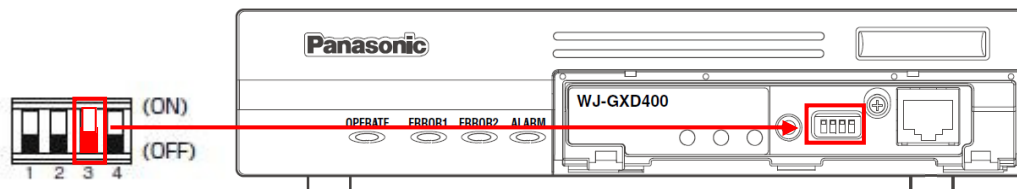
Do not care about the PROGRAM Ver. Here.

Later, do the same process as **4. Upload Firmware.**

7.6 After Upload/Reboot process, the following screen will appear.



7.7 Open the front panel, and set [MODE] sw3 "OFF"



7.8 Power OFF

7.9 Power ON, then this equipment will start up on "**Normal Mode**".

*** Finish SAFE MODE recovery process ***